

The perception and value of science and research

*Results of a representative
National Survey*
Luxembourg 2025

How much
do people in
Luxembourg trust
science and
researchers?

Do people in
Luxembourg believe
science has an impact
on society?

Should political
decisions be based
on scientific
findings?

Are our kids
well trained in
science in
schools?



The FNR implements regular representative barometric surveys on the perception and the value attributed to science and research. With the objective to monitor their evolution over time.

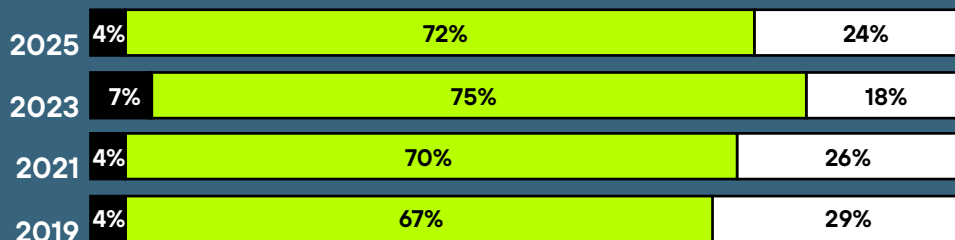
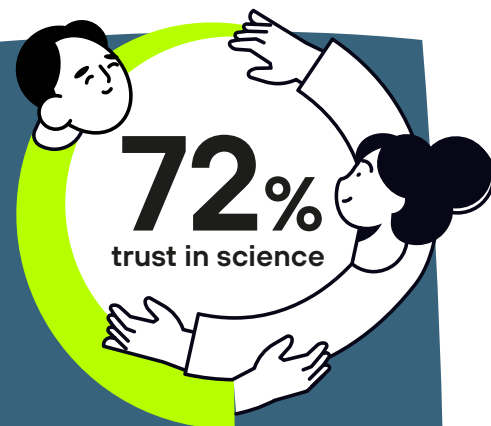
Sample of 600 respondents representative of the Luxembourgish population based upon two gender quotas, four age quotas and two nationality quotas.

Methods: cawi method (computer aided web interviews through the panel Question.lu) (n=501), capi method (computer aided public interviews conducted in the public space) (n=99). Survey by Quest.



Luxembourg
National
Research Fund

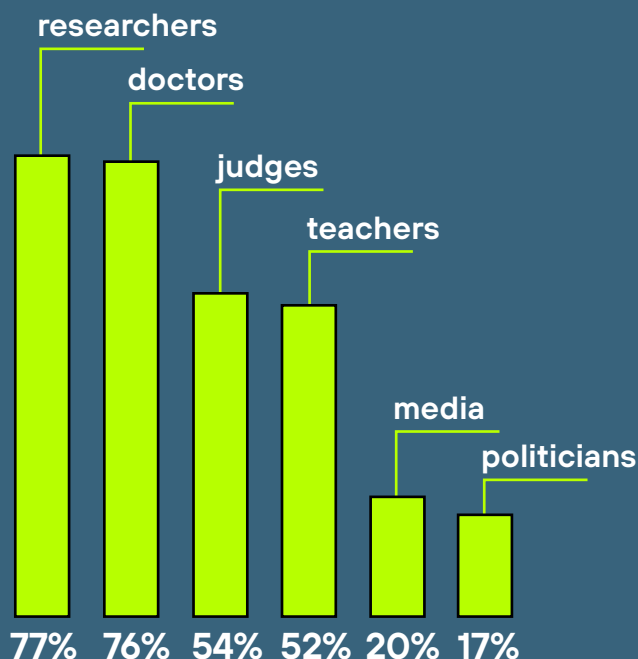
Science & Research: Public trust scores remain on a high level



do not really trust/do not trust at all
 rather trust/absolutely trust
 no opinion/neutral

Trust levels for different professions:

Compared to other professions, trust levels are highest for researchers



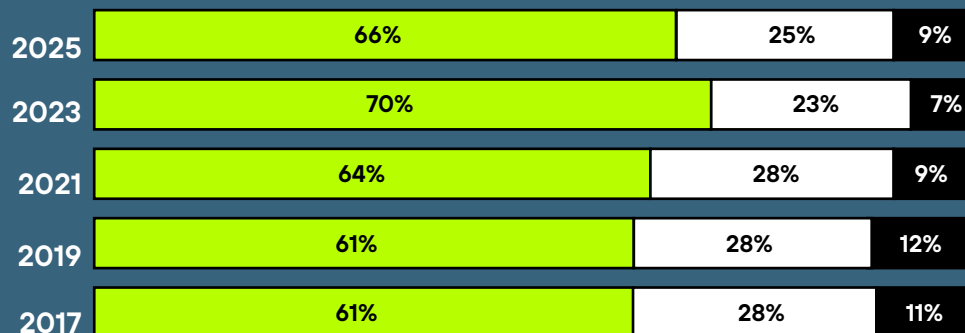
Which information do people trust most?

Information spread by actors of science and research vs information you read in the press about science and research





Interest of the public in science and research



66%
are moderately or very interested in science

very & moderately interested
 a little interested
 not at all interested

Percentages may not sum to 100% due to rounding.

How well do people from Luxembourg feel informed about science and research?

feel moderately or well informed



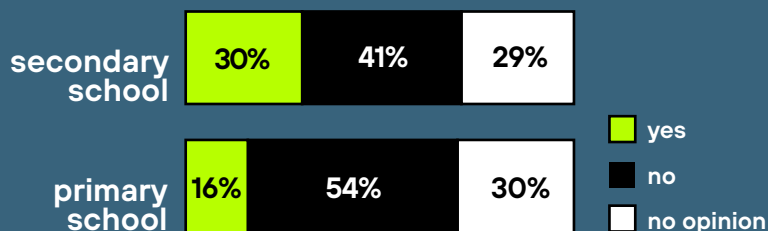
feel not at all informed

feel a little informed



Science education in schools

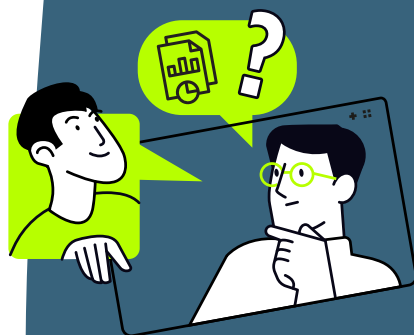
Are kids sufficiently well trained in schools?



While people feel that the quality of science education in secondary schools goes up, they remain critic about the primary schools.

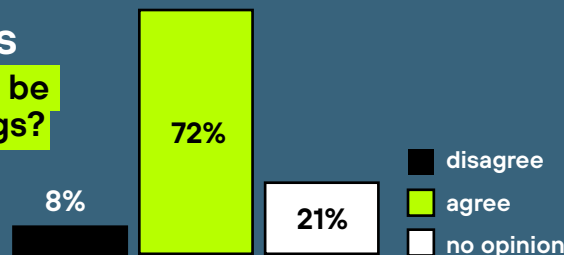
The general public perceives science and research as beneficial to our lives and society

On a scale of 1 to 6 - scientific research helps to:



Science and Politics

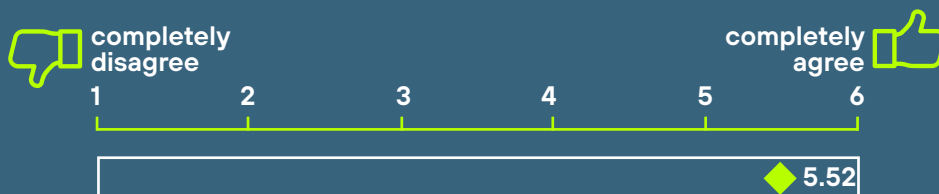
Should political decisions be based on scientific findings?



Percentages may not sum to 100% due to rounding.

Support for science and investments in research

On a scale of 1 to 6 - even a small country like Luxembourg should perform scientific research:



87% of respondents agreed in 2023 vs 95% in 2025



A majority thinks that Luxembourg should invest even more in research

